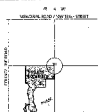


SCALE: 1" = 80'
 GRAPHIC SCALE IN FEET
 BASED ON ELEVATION
 1040.00
 BASE OF BEARING: SOUTHWEST OF THE
 SW/4 OF SECTION 18, T13N, R4W, I.M.
 (RMP# 17-27-04)

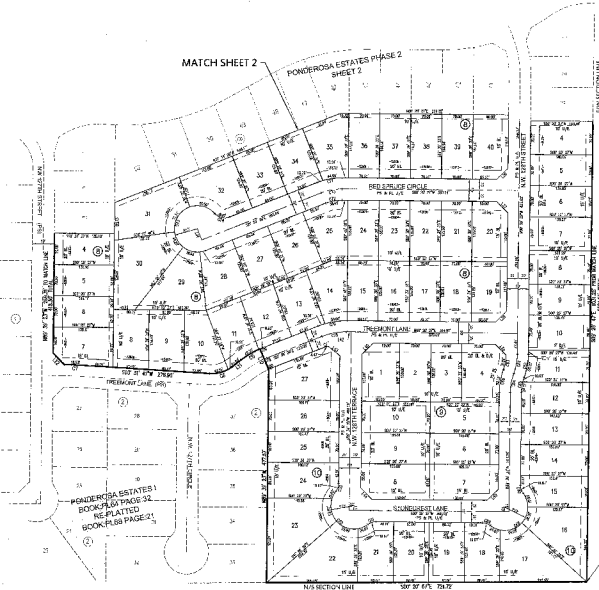
FINAL PLAT
 OF
PONDEROSA ESTATES PHASE 2
 A PART OF THE SW/4 OF SECTION 18, T13N, R4W, I.M.
 OKLAHOMA CITY, OKLAHOMA COUNTY, OKLAHOMA



LOCATION EMP
 SCALE: 1" = 200'

MATCH SHEET 2

PONDEROSA ESTATES PHASE 2
 SHEET 2

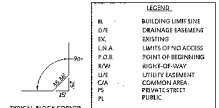


LINE #	LENGTH	DIRECTION
1A	100.00'	S89° 00' 00" W
1B	100.00'	N89° 00' 00" E
1C	100.00'	S89° 00' 00" W
1D	100.00'	N89° 00' 00" E
1E	100.00'	S89° 00' 00" W
1F	100.00'	N89° 00' 00" E
1G	100.00'	S89° 00' 00" W
1H	100.00'	N89° 00' 00" E
1I	100.00'	S89° 00' 00" W
1J	100.00'	N89° 00' 00" E
1K	100.00'	S89° 00' 00" W
1L	100.00'	N89° 00' 00" E
1M	100.00'	S89° 00' 00" W
1N	100.00'	N89° 00' 00" E
1O	100.00'	S89° 00' 00" W
1P	100.00'	N89° 00' 00" E
1Q	100.00'	S89° 00' 00" W
1R	100.00'	N89° 00' 00" E
1S	100.00'	S89° 00' 00" W
1T	100.00'	N89° 00' 00" E
1U	100.00'	S89° 00' 00" W
1V	100.00'	N89° 00' 00" E
1W	100.00'	S89° 00' 00" W
1X	100.00'	N89° 00' 00" E
1Y	100.00'	S89° 00' 00" W
1Z	100.00'	N89° 00' 00" E

OWNER #	LENGTH	FRONT	BEARS	OWNER	SECTION	FRONT LENGTH
01	40.00'	20.00'	0.000000	UNDIVIDED	0.0000	40.00'
02	20.00'	10.00'	0.000000	UNDIVIDED	0.0000	20.00'
03	40.00'	20.00'	0.000000	UNDIVIDED	0.0000	40.00'
04	40.00'	20.00'	0.000000	UNDIVIDED	0.0000	40.00'
05	40.00'	20.00'	0.000000	UNDIVIDED	0.0000	40.00'
06	40.00'	20.00'	0.000000	UNDIVIDED	0.0000	40.00'
07	40.00'	20.00'	0.000000	UNDIVIDED	0.0000	40.00'
08	40.00'	20.00'	0.000000	UNDIVIDED	0.0000	40.00'
09	40.00'	20.00'	0.000000	UNDIVIDED	0.0000	40.00'
10	40.00'	20.00'	0.000000	UNDIVIDED	0.0000	40.00'
11	40.00'	20.00'	0.000000	UNDIVIDED	0.0000	40.00'
12	40.00'	20.00'	0.000000	UNDIVIDED	0.0000	40.00'
13	40.00'	20.00'	0.000000	UNDIVIDED	0.0000	40.00'
14	40.00'	20.00'	0.000000	UNDIVIDED	0.0000	40.00'
15	40.00'	20.00'	0.000000	UNDIVIDED	0.0000	40.00'
16	40.00'	20.00'	0.000000	UNDIVIDED	0.0000	40.00'
17	40.00'	20.00'	0.000000	UNDIVIDED	0.0000	40.00'
18	40.00'	20.00'	0.000000	UNDIVIDED	0.0000	40.00'
19	40.00'	20.00'	0.000000	UNDIVIDED	0.0000	40.00'
20	40.00'	20.00'	0.000000	UNDIVIDED	0.0000	40.00'
21	40.00'	20.00'	0.000000	UNDIVIDED	0.0000	40.00'
22	40.00'	20.00'	0.000000	UNDIVIDED	0.0000	40.00'
23	40.00'	20.00'	0.000000	UNDIVIDED	0.0000	40.00'
24	40.00'	20.00'	0.000000	UNDIVIDED	0.0000	40.00'
25	40.00'	20.00'	0.000000	UNDIVIDED	0.0000	40.00'
26	40.00'	20.00'	0.000000	UNDIVIDED	0.0000	40.00'
27	40.00'	20.00'	0.000000	UNDIVIDED	0.0000	40.00'
28	40.00'	20.00'	0.000000	UNDIVIDED	0.0000	40.00'
29	40.00'	20.00'	0.000000	UNDIVIDED	0.0000	40.00'
30	40.00'	20.00'	0.000000	UNDIVIDED	0.0000	40.00'
31	40.00'	20.00'	0.000000	UNDIVIDED	0.0000	40.00'
32	40.00'	20.00'	0.000000	UNDIVIDED	0.0000	40.00'
33	40.00'	20.00'	0.000000	UNDIVIDED	0.0000	40.00'
34	40.00'	20.00'	0.000000	UNDIVIDED	0.0000	40.00'
35	40.00'	20.00'	0.000000	UNDIVIDED	0.0000	40.00'
36	40.00'	20.00'	0.000000	UNDIVIDED	0.0000	40.00'
37	40.00'	20.00'	0.000000	UNDIVIDED	0.0000	40.00'
38	40.00'	20.00'	0.000000	UNDIVIDED	0.0000	40.00'
39	40.00'	20.00'	0.000000	UNDIVIDED	0.0000	40.00'
40	40.00'	20.00'	0.000000	UNDIVIDED	0.0000	40.00'
41	40.00'	20.00'	0.000000	UNDIVIDED	0.0000	40.00'
42	40.00'	20.00'	0.000000	UNDIVIDED	0.0000	40.00'
43	40.00'	20.00'	0.000000	UNDIVIDED	0.0000	40.00'
44	40.00'	20.00'	0.000000	UNDIVIDED	0.0000	40.00'
45	40.00'	20.00'	0.000000	UNDIVIDED	0.0000	40.00'

NOTES:

- THIS PLAT OF SURVEY MEETS THE OIL AND GAS (AND RELATED) PROVISIONS OF THE PRACTICE OF LAND SURVEYING AS ADOPTED BY THE GRAND OIL AND GAS STATE BOARD OF REGISTRATION, "OIL AND GAS PROVISIONS, OIL AND GAS SURVEYING, AND THE LATER PART OF CHAPTER 105 OF THE OKLAHOMA STATUTES, AS AMENDED BY HOUSE BILL NO. 1000, CHAPTER 105, SECTION 105-1-101 OF THE OKLAHOMA STATE STATUTES.
- CONTINUED OF BOUNDARY AGREEMENTS SHALL BE AS FOLLOWS:
 1. PROPERTY CORNER MARKERS SHALL BE:
 1/4" IRON ROD WITH A PLASTIC CAP ENGRAVED "T&E GATTS"
 3/4" IRON ROD WITH A PLASTIC CAP ENGRAVED "T&E GATTS"
 4. INCH MARKER - 1 1/2" IRON ROD WITH A PLASTIC CAP ENGRAVED "T&E GATTS"
 1/2" IRON ROD WITH A PLASTIC CAP ENGRAVED "T&E GATTS"
- SECTION 105-1-101(B) OF THE OKLAHOMA STATUTES.
- SECTION 105-1-101(C) OF THE OKLAHOMA STATUTES.
- SECTION 105-1-101(D) OF THE OKLAHOMA STATUTES.
- SECTION 105-1-101(E) OF THE OKLAHOMA STATUTES.
- SECTION 105-1-101(F) OF THE OKLAHOMA STATUTES.
- SECTION 105-1-101(G) OF THE OKLAHOMA STATUTES.
- SECTION 105-1-101(H) OF THE OKLAHOMA STATUTES.
- SECTION 105-1-101(I) OF THE OKLAHOMA STATUTES.
- SECTION 105-1-101(J) OF THE OKLAHOMA STATUTES.
- SECTION 105-1-101(K) OF THE OKLAHOMA STATUTES.
- SECTION 105-1-101(L) OF THE OKLAHOMA STATUTES.
- SECTION 105-1-101(M) OF THE OKLAHOMA STATUTES.
- SECTION 105-1-101(N) OF THE OKLAHOMA STATUTES.
- SECTION 105-1-101(O) OF THE OKLAHOMA STATUTES.
- SECTION 105-1-101(P) OF THE OKLAHOMA STATUTES.
- SECTION 105-1-101(Q) OF THE OKLAHOMA STATUTES.
- SECTION 105-1-101(R) OF THE OKLAHOMA STATUTES.
- SECTION 105-1-101(S) OF THE OKLAHOMA STATUTES.
- SECTION 105-1-101(T) OF THE OKLAHOMA STATUTES.
- SECTION 105-1-101(U) OF THE OKLAHOMA STATUTES.
- SECTION 105-1-101(V) OF THE OKLAHOMA STATUTES.
- SECTION 105-1-101(W) OF THE OKLAHOMA STATUTES.
- SECTION 105-1-101(X) OF THE OKLAHOMA STATUTES.
- SECTION 105-1-101(Y) OF THE OKLAHOMA STATUTES.
- SECTION 105-1-101(Z) OF THE OKLAHOMA STATUTES.



FINAL PLAT TO SURVEY
 PONDEROSA ESTATES PHASE 2

Crafton Tull
 SURVEYORS & ENGINEERS
 1000 N. WESTERN AVENUE, SUITE 100
 OKLAHOMA CITY, OKLAHOMA 73102
 PHONE: 405.231.1111

DATE: 05/07/14
 SHEET: 05/07/14
 PROJECT: 136018-00